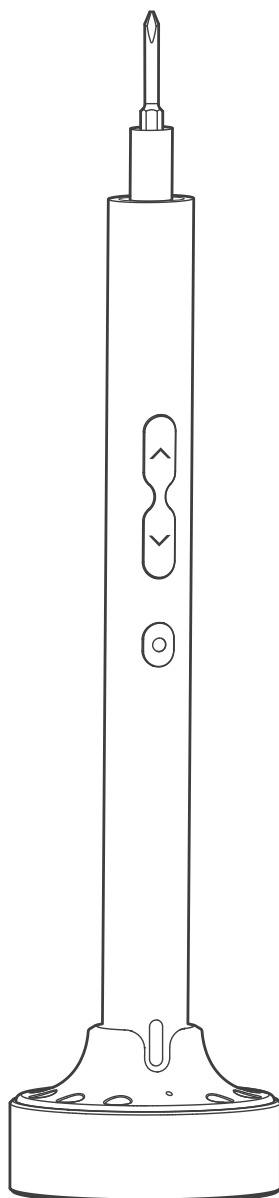


PRECISION SCREWDRIVER SET

NO-882037



User Manual

Before use, please carefully read all safety warnings, instructions, illustrations, and regulations marked in the manual.



Safety Warm Tip

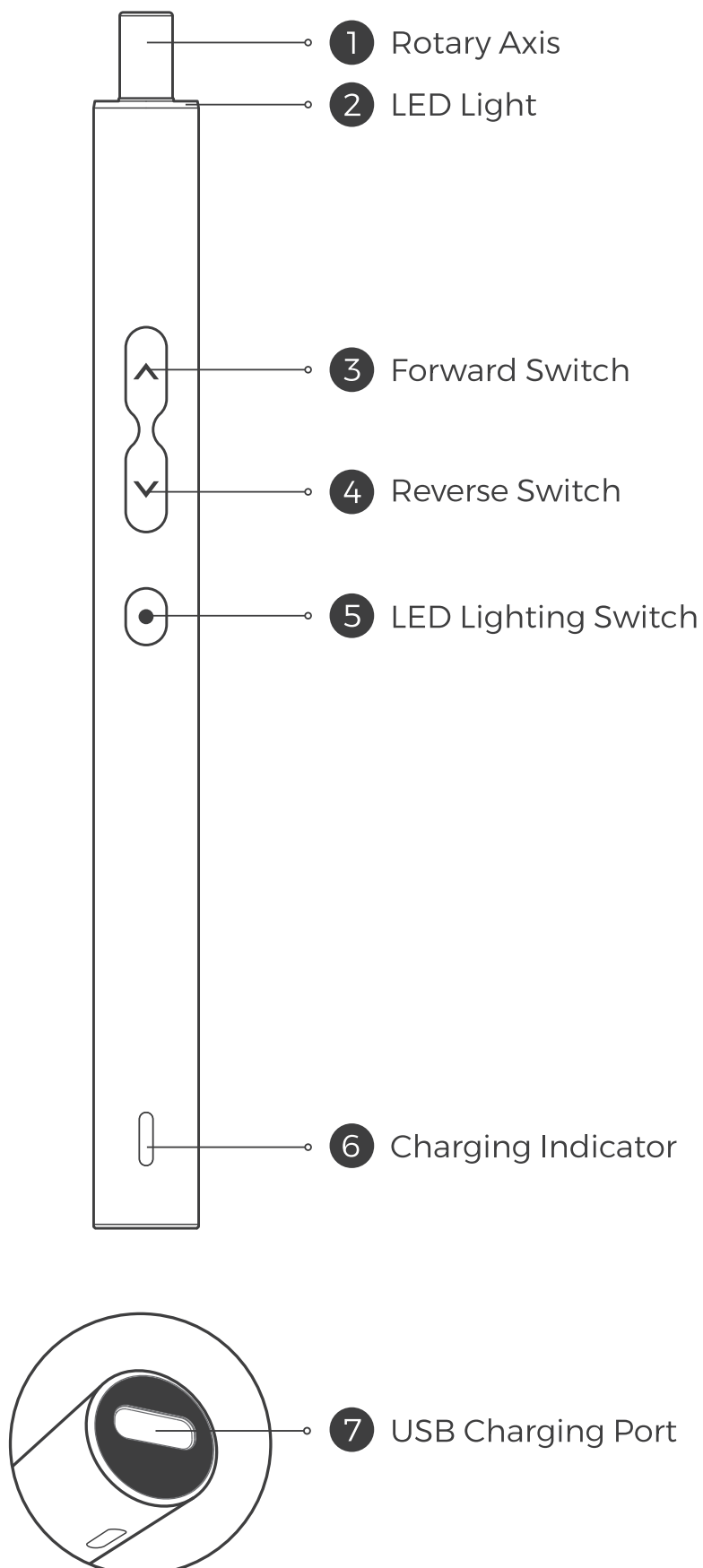
Electrical Safety

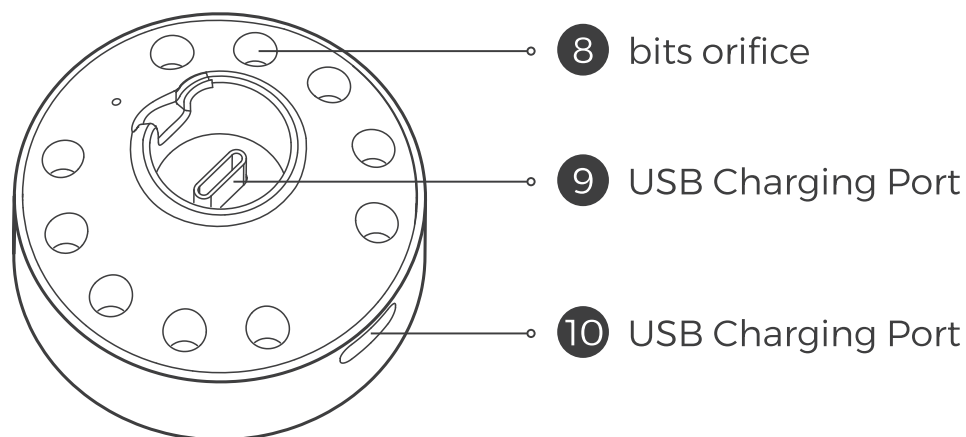
- 1, the electric screwdriver charging head needs to use original accessories, which will greatly reduce the danger of charging.
- 2, please do not expose the electric screwdriver to the sun burst or placed it in a humid environment, which will lead to the screwdriver rust and can not be used.
- 3, if you can not avoid using the electric screwdriver in a humid environment, please wear silicone type gloves as a protective measure to reduce the risk of electric shock.
- 4, if the electric screwdrivers is operated in an electrostatic environment, please install an electrostatic ring to demagnetize the bit to reduce operating accidents.

Personal Safety

- 1, Electric screwdriver has a certain degree of danger, please do not let babies or children to use the product to avoid harm to them.
- 2, Do not put it in your personal pocket or bag to avoid accidental activation of the electric screwdriver and cause injury.
- 3, when operating the electric screwdriver, the hand grip height should not be too high or too low. Ensure that other external forces can also control the electric screwdriver.

Part Description





Charging Instruction

Electric screwdriver

When using the Type-C USB charging port, the charging indicator shows white means “ charging ”, shows green means “ full charge ”.

- 1, Please charge the screwdriver fully and the charging time is no more than 2.5 hours before when using the screwdriver the first time.
- 2, Please charge the screwdriver at lease once a month to maintain a good performance.
- 3, Only charge the screwdriver by using the provided charging cable.

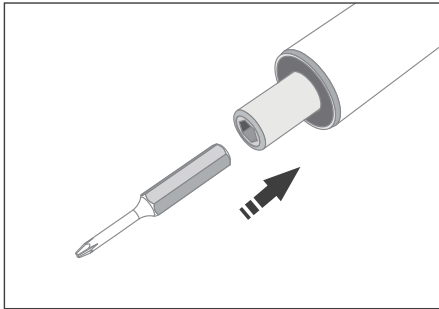
Charging Base

Light status:

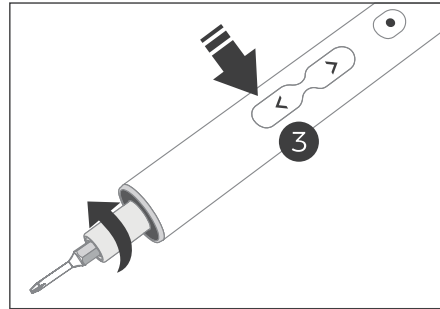
- Charging: with light blinking
- Fully charged: white light on for a long time
- Discharge: white light on long
- Discharge low power: white light flashing

*Suitable for new electric screwdrivers after 2023.

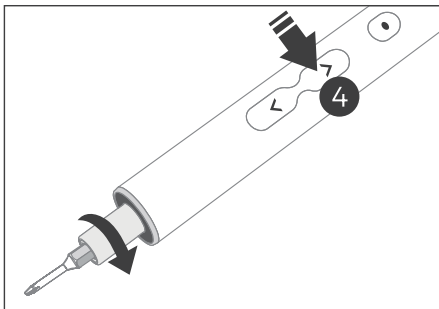
Using Steps



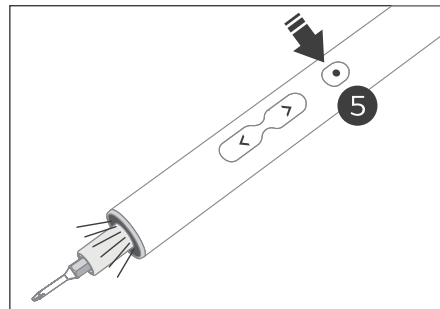
1. Install bit.



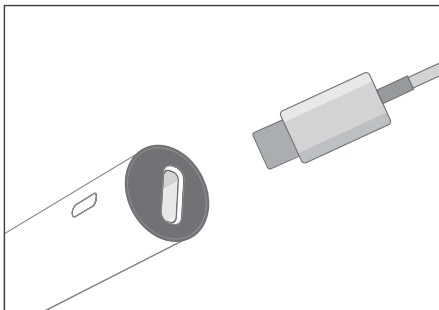
2. Press ③, tighten the screws.



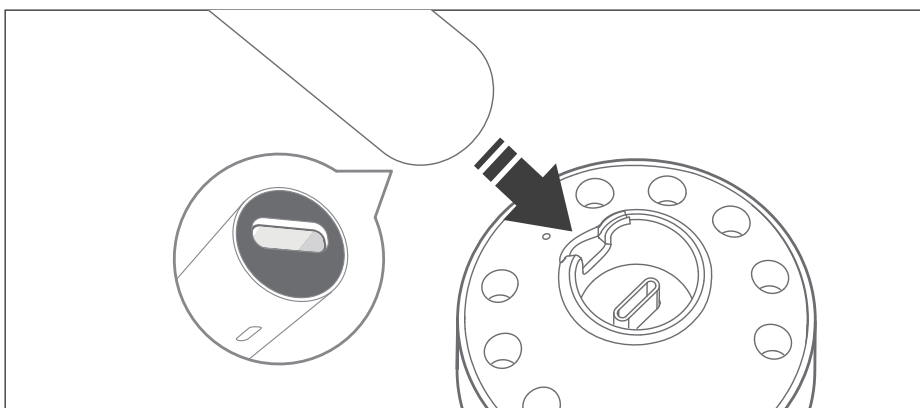
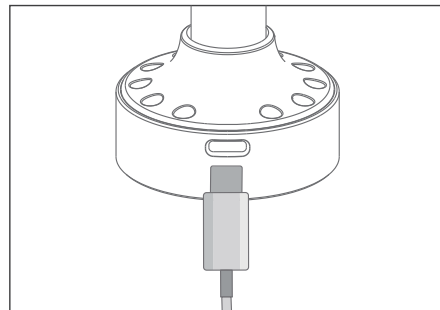
3. Press ④, loosen the screws.



4. Press ⑤, turn on the light, Press again, turn off the light.



5. There is a Type-C USB charging port at the end of the screwdriver or charging base.



6. When charging, align the end connector of the electric screwdriver with the charging port of the charging base, the light on the end of the electric screwdriver means charging.

Product Specification:

Model: NO-882037
Bit Material: S2 Premium Steel
Product Size: 119x16x16.5mm
Package Size: 213x98x35mm

Electric Screwdriver Specifications:










Battery Type: Li Battery	Voltage: 3.7V-DC
Battery Capacity: 350mAh	Idling Speed: 200rpm
Electric Torque: 0.25-0.35N.m	Manual Torqye: 3N.m
Charging Time: <70mins	Net Weight: 54g

Charging Base Specifications:

Battery Capacity: 600mAh
Output Voltage Max: 5V 2A
Input Voltage: 5V 0.75A
Charging Time: <30mins

* Full charge can be used to recharge an electric screwdriver twice.

24 Pcs Screwdriver Bits:

 PH000, PH00, PH0, PH1, PH2	 U2.6
 SL1.5, SL2.0, SL3.0, SL4.0	 2.3
 T5H, T6H, T8H, T10H, T15H	 Y1
 P2(Pentalobe 0.8), P5(Pentalobe 1.2)	
 T2, T3, T4	 H1.5, H2.0

Precautions for use

- 1, when using the electric screwdriver to remove the screw, you can loosen the screw by hand first, to avoid damage the screw and the product parts at the screw.
- 2, when the electric screwdriver is not in use , please put the electric screwdriver out of the reach of children.
- 3, if the product accidentally falls into the water or splashes into the machine, please stop using the product to avoid short circuit.
- 4, When maintaining the electric screwdriver, please check whether the bit rotates smoothly and whether other parts are damaged, etc.. If damaged, please repair it before use, using a damaged electric screwdriver may cause accidents.
- 5, When operating fasteners or touching hidden wires, to hold the electric screwdriver through the insulator gripping surface. Beware of fasteners touching live wires, which will electrify the exposed metal parts of the tool and cause electric shock to the operator.
- 6, Do not disassemble the product without permission.
- 7, Please operate according to the manual.

Maintenance

- 1, Ask professional maintenance staffs to use the same spare parts to repair the electric screwdriver. This will ensure the safety of the electric screwdriver being repaired.
- 2, Never repair the damaged battery pack. The battery pack can only be repaired by the producer or the authorized service providers.

Built-in battery safety warning

- 1, Forbidden to disassemble, substitute opening or shredding tool.
- 2, Forbidden to expose the electric screwdriver to heat source or flames, and avoid storing it under direct sunlight.
- 3, Forbidden to short-circuit the exposed terminals, do not put more than one tool in a box or drawer to avoid short-circuiting between them or by other metal. Avoid short-circuiting between them or by other metal objects.
- 4, In case of battery leakage, do not let the leakage touch the skin or eyes. If case of contact, flush effected area with plenty of water and seek medical attention.
- 5, Do not use non-specified adapters.
- 6, Do not use batteries that are not specific to the device.
- 7, Keep the tool clean and dry.
- 8, If the tool charging extreme becomes dirty should be wiped with a clean and dry cloth.
- 9, Electric screwdriver should be charged before use. Charging should be done with the correct charger and refer to the manufacturer's instructions or the correct Instructions for charging.
- 10, Do not charge the tool for a long time when not in use.
- 11, After frequent long-term storage, the tool should be charged and discharged several times to obtain the best performance.